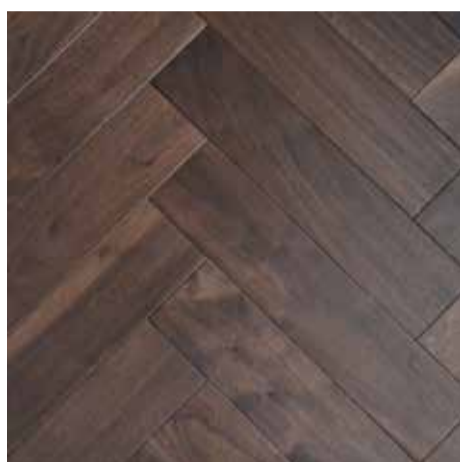


## Our **Ezzogenics** flooring products



**BURMESE TEAK**



**WALNUT**



**OAK**



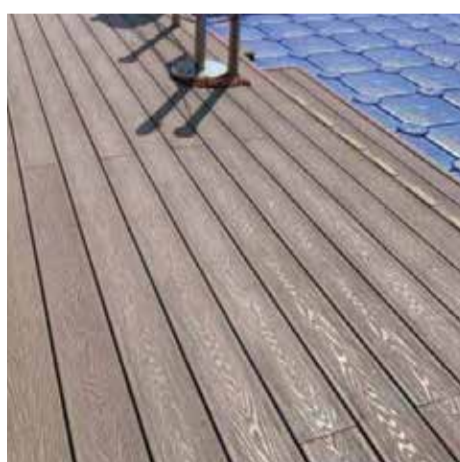
**OUTDOOR  
DECKING**



**MAPLE**



**ENGINEERED  
WOOD**



**COMPOSITE  
DECKING**



# Burmese Teak Flooring

## TEAK Specifications



### Hardness

The Janka hardness rating for Teak wood is 1155 lbf, which is considered to be very hard.



### Density

The density of teak wood is about 41 pounds per cubic foot, which is considered to be medium density.



### Color

Tends to be a golden or medium brown, with color darkening with age.



### Usage

Parquet Flooring, stair board, decking and furniture.

## Supply and install pricing with sizes of Burmese Teak

### Burmese Teak Parquet



Size/Length	200-250 mm	300-900 mm
11 x 50 mm	\$8.90 psf	\$11.00 psf

Size/Length	12" - 34"	12" - 48"	36" - 48"
11 x 73 mm	\$12.10 psf	\$12.50 psf	\$12.90 psf
11 x 95 mm	\$12.60 psf	\$13.20 psf	\$14.00 psf
17 x 73 mm	\$14.20 psf	\$14.60 psf	\$15.40 psf
17 x 95 mm	\$14.50 psf	\$15.50 psf	\$15.70 psf

Size/Length	18" - 66" (50/50 %)	36" - 66"
17 x 120 mm	\$17.50psf	\$18.10 psf

Size/Length	18" - 66" (50/50 %)	36" - 66"
17 x 140 mm	\$17.90 psf	\$18.80 psf

### Burmese Teak Herringbone



Size/Length	12" - 16"
11 x 50 mm	\$4.00 psf
11 x 95 mm	\$4.30 psf
17 x 95 mm	\$5.80 psf

Size/Length	600 mm
11 x 95 mm	\$5.50 psf

Price quoted excludes plywood underlay. Typically up to 9mm WBP plywood is recommended for long parquet pieces. Plywood costs excludes termite treatment. Supply and install plywood would be an additional \$2.50 per sqft.

**Note:** Minimum installation area applies. Please enquire for details.

\* Price stated are subject to change without prior notice

## Supply and install pricing with sizes of Burmese Teak

### Burmese Teak Chevron



Size/Length	12" - 14"
11 x 73 mm	\$12.50 psf
11 x 95 mm	\$12.80 psf
17 x 95 mm	\$14.80 psf

Size/Length	600 mm
17 x 95 mm	\$16.00 psf

### Burmese Teak Skirting



Size/Length	5' /up
10 x 73 mm	\$5.00 per ft run
10 x 95 mm	\$6.00 per ft run

\* Price stated are subject to change without prior notice

## Supply and install pricing with sizes of Burmese Teak

### Burmese Teak Nosing



Size/Length	3.5' - 5.5'	6' /up
11 x 50 mm	T.B.A.	T.B.A.

**T.B.A. : Price is dependent on length, width and design of the staircase steps**

## Burmese Teak Decking (E4E)

Size/Length	1000-3000 mm
19 x 95 mm	\$24/per sqft
19 x 120 mm	\$25/per sqft

\* Price stated are subject to change without prior notice



# Oak Flooring

## TEAK Specifications



### Hardness

The Janka hardness rating for Oak wood is 1360 lbf, which is considered to be extremely hard.



### Density

The density of oak wood can range from 0.6 to 0.9 grams per cubic centimeter (g/cm<sup>3</sup>).



### Color

Light beige to brown.



### Usage

Parquet Flooring, stair board, furniture & boatbuilding.

## Supply and installation price of Oak Parquet

### Oak Parquet



Size/Length	300-1200 mm	300-1500 mm
11 x 70 mm		\$10.50 per sqft
11 x 95 mm		\$10.90 per sqft
18 x 95 mm	\$12.20 per sqft	
18 x 125 mm	\$12.70 per sqft	
18 x 150 mm	\$13.50 per sqft	

### Oak Skirting(Round/Square)

Size/Length	4'-8'
10 x 70 mm	\$5.00 per ft run
10 x 95 mm	\$6.00 per ft run



\* Price stated are subject to change without prior notice

## Supply and installation price of Oak Parquet

### Oak Herringbone



Size/Length	420 mm	450 mm
11 x 70 mm	\$13.50 per sqft	
11 x 95 mm		\$13.80 per sqft
18 x 95 mm		\$15.80 per sqft

### Oak Chevron



Size/Length	450 mm	600 mm
11 x 95 mm	\$13.80 per sqft	\$14.20 per sqft
18 x 95 mm	\$15.60 per sqft	\$16.00 per sqft

Price quoted excludes plywood underlay. Typically up to 9mm WBP plywood is recommended for long parquet pieces. Plywood costs excludes termite treatment. Supply and install plywood would be an additional \$2.50 per sqft.

**Note:** Minimum installation area applies. Please enquire for details.

\* Price stated are subject to change without prior notice



# Walnut Flooring

## TEAK Specifications



### Hardness

The Janka hardness rating for walnut wood is 1010 (lbf), which is considered to be medium-soft to medium-hard.



### Density

The density of walnut is about 40 pounds per cubic foot, which is considered to be medium density.



### Color

It can range from a lighter pale brown to a dark chocolate brown with sap.



### Usage

Parquet Flooring, furniture & veneer.

## Supply and installation price of Walnut Parquet

### Walnut Parquet



Size/Length	400-1200 mm
10 x 70 mm	\$12.70 per sqft
10 x 95 mm	\$15.30 per sqft
18 x 95 mm	\$18.30 per sqft
18 x 125 mm	\$19.30 per sqft
18 x 150 mm	\$21.30 per sqft

### Walnut Skirting

Size/Length	4'-8'
11 x 70 mm	\$6.00 per ft run
10 x 95 mm	\$7.00 per ft run



\* Price stated are subject to change without prior notice

## Supply and installation price of Walnut Parquet

### Walnut Herringbone



### Walnut Chevron



## Walnut Engineered Wood (prefinished/natural matt)

Size/Length	600-1900 mm
14/I3 x150 mm @24.54/ft2	\$12.00 per sqft
14/L3 x 190 mm @32.09/ft2	\$14.80 per sqft

\* Price stated are subject to change without prior notice



# Maple Flooring

## TEAK Specifications



### Hardness

The Janka hardness of hard maple rating of 1450(lbf) while soft maple is slightly less hard with a rating of 950.



### Density

The density of hard maple (*Acer saccharum*) is around 44-49 lbs/ft<sup>3</sup> while the density of soft maple (*Acer rubrum*) is around 32-39 lbs/ft<sup>3</sup>.



### Color

Sapwood color ranges from nearly white, to an off-white cream color, sometimes with a reddish or golden hue.



### Usage

Flooring, cutting boards, butcher blocks, and other specialty wood items.

## Supply and installation price of Maple Parquet

### Maple Parquet



Size/Length	400-1200 mm
18 x 95 mm	\$12.50/ft <sup>2</sup>

### Maple Skirting



Size/Length	4' up
10 x 70 mm	
10 x 95 mm	

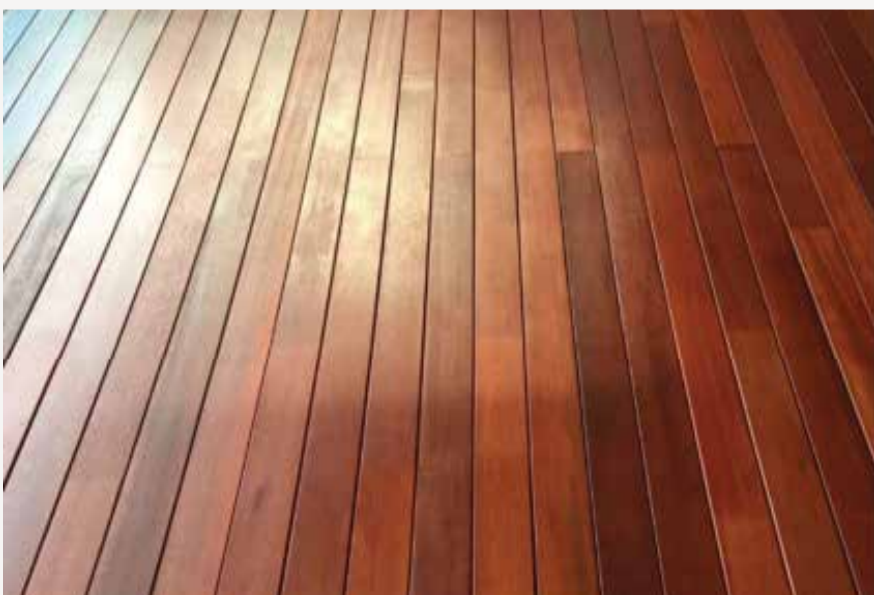
\* Price stated are subject to change without prior notice



# Outdoor Decking

## Chengal Outdoor Decking

---



**Size**

20 x 95 mm

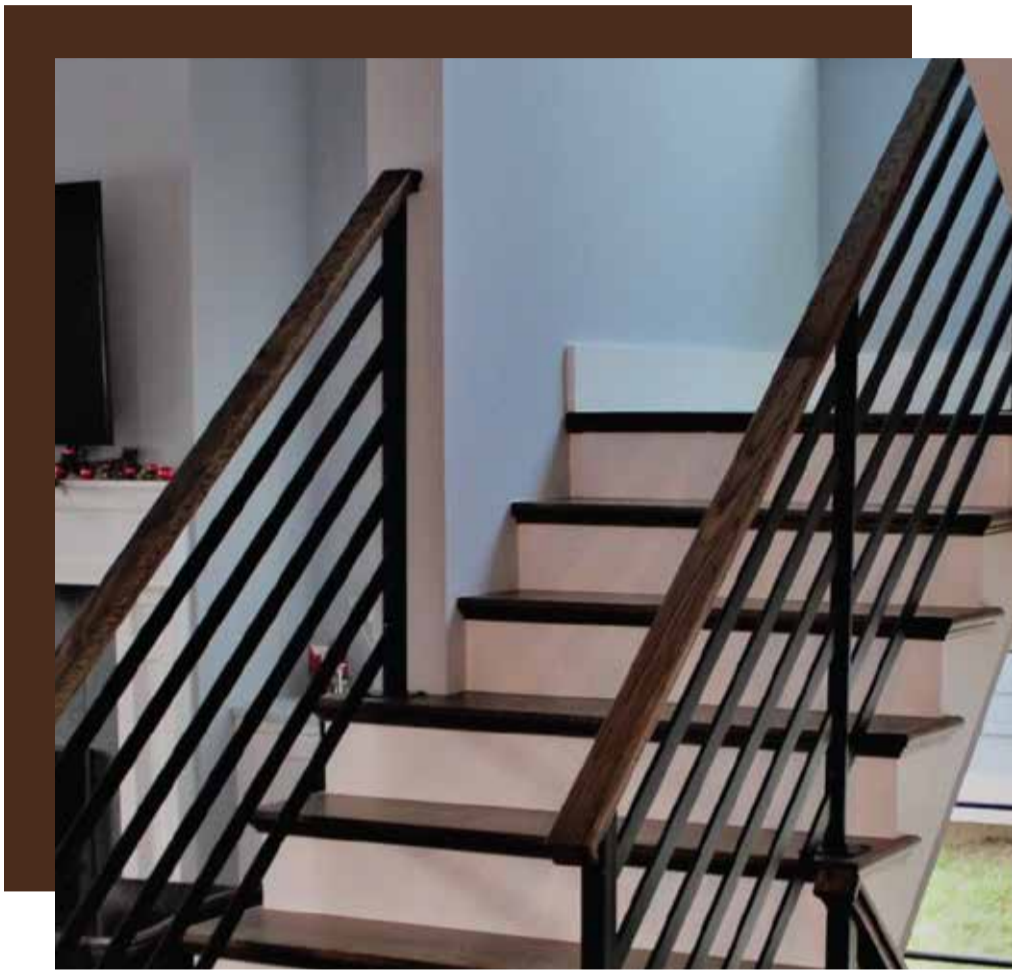
## Burmese Teak Outdoor Decking

---



**Size**

19 x 95 mm x 900 mm - 3000 mm  
19 x 120 mm x 900 mm - 3000 mm



# Handrail

## Oak Round Handrail

---



**Size**  
D45 mm

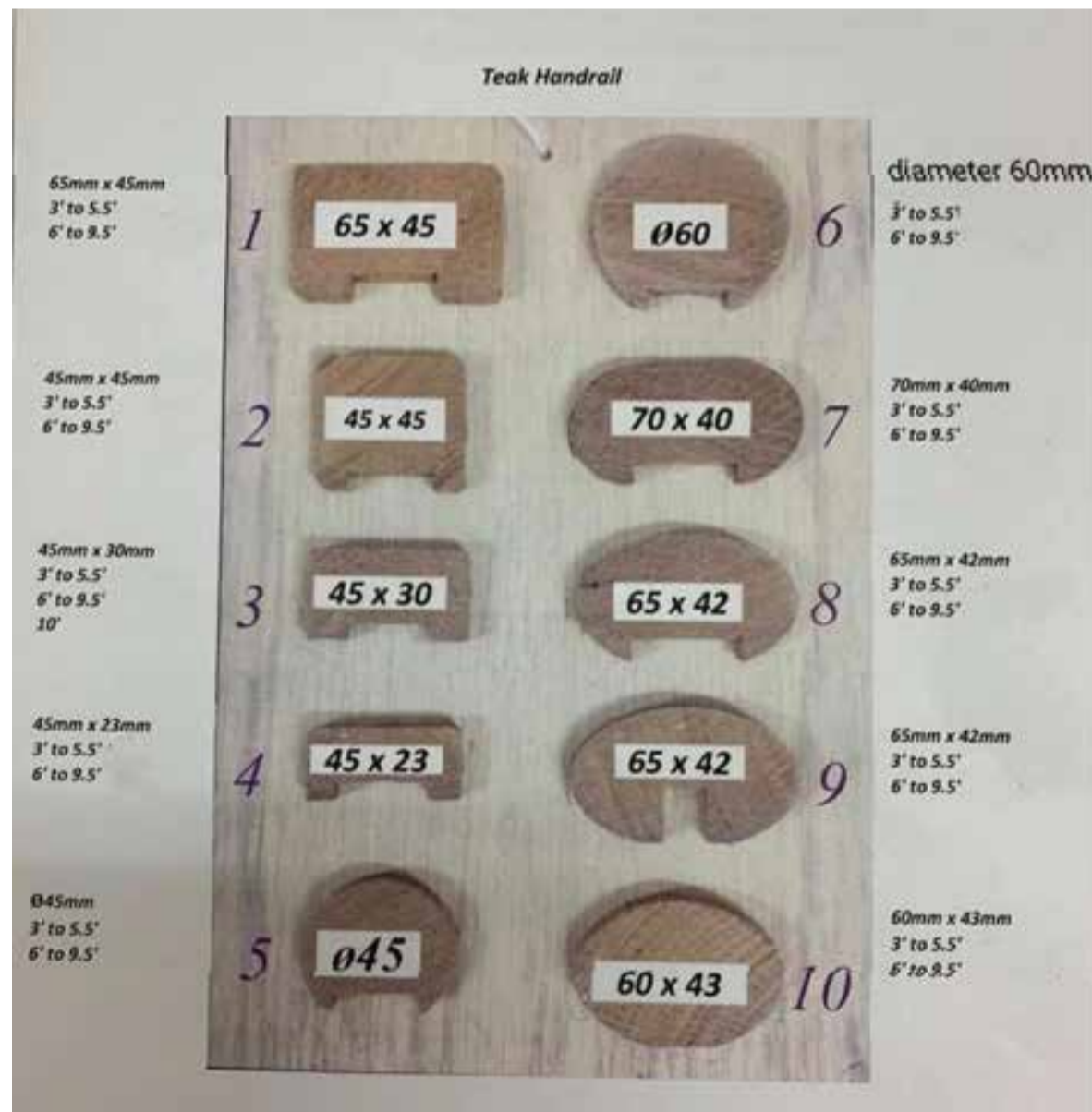
## Oak Square Handrail

---

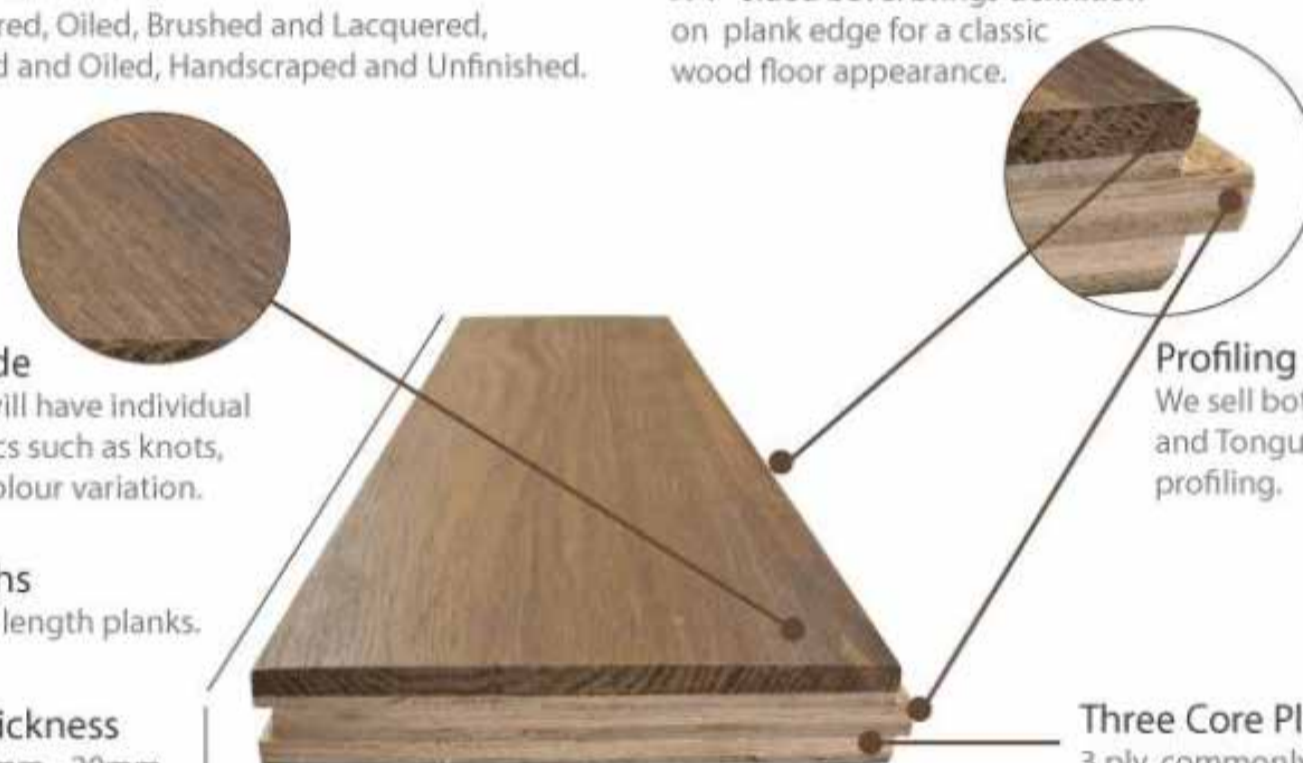


**Size**  
45 x 45 mm

## Final Products: Types of Handrail



## Whats Engineered Wood Made of?



**Range of Finishes**  
Lacquered, Oiled, Brushed and Lacquered,  
Brushed and Oiled, Handscraped and Unfinished.

**4 - Sided V-Groove**  
A 4 - sided bevel brings definition  
on plank edge for a classic  
wood floor appearance.

**Rustic Grade**  
Each plank will have individual  
characteristics such as knots,  
grains and colour variation.

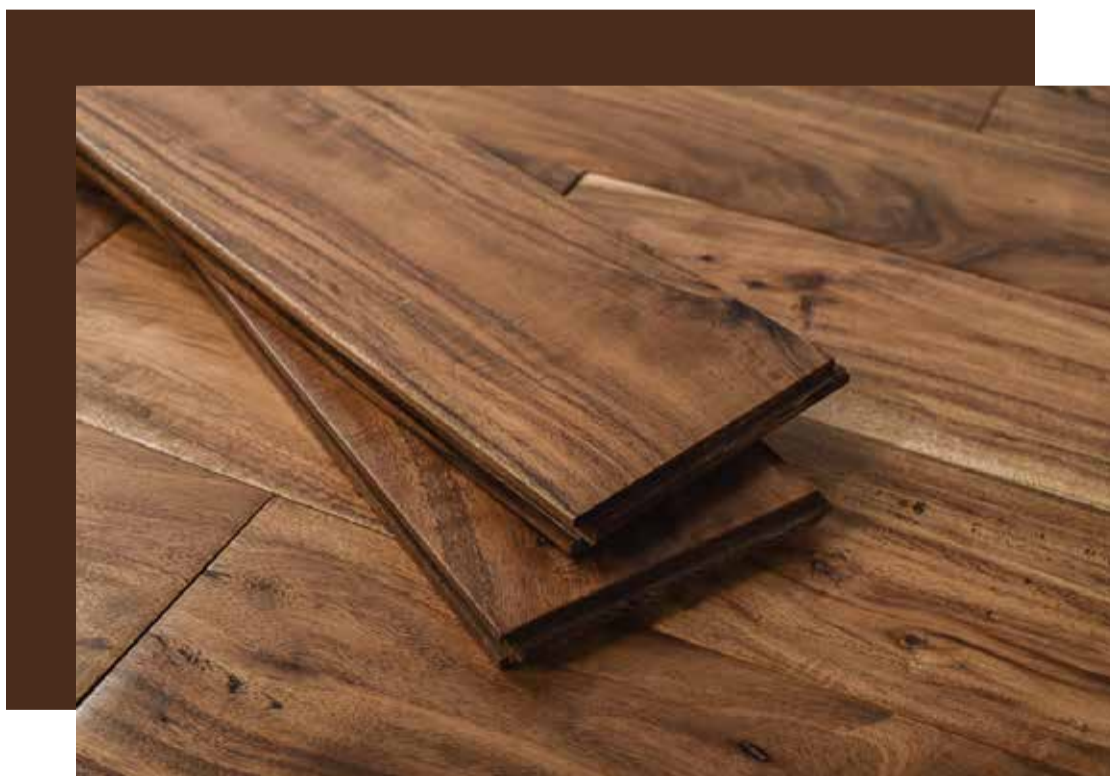
**Profiling**  
We sell both Click profiling,  
and Tongue and Groove  
profiling.

**Board Lengths**  
Random to full length planks.

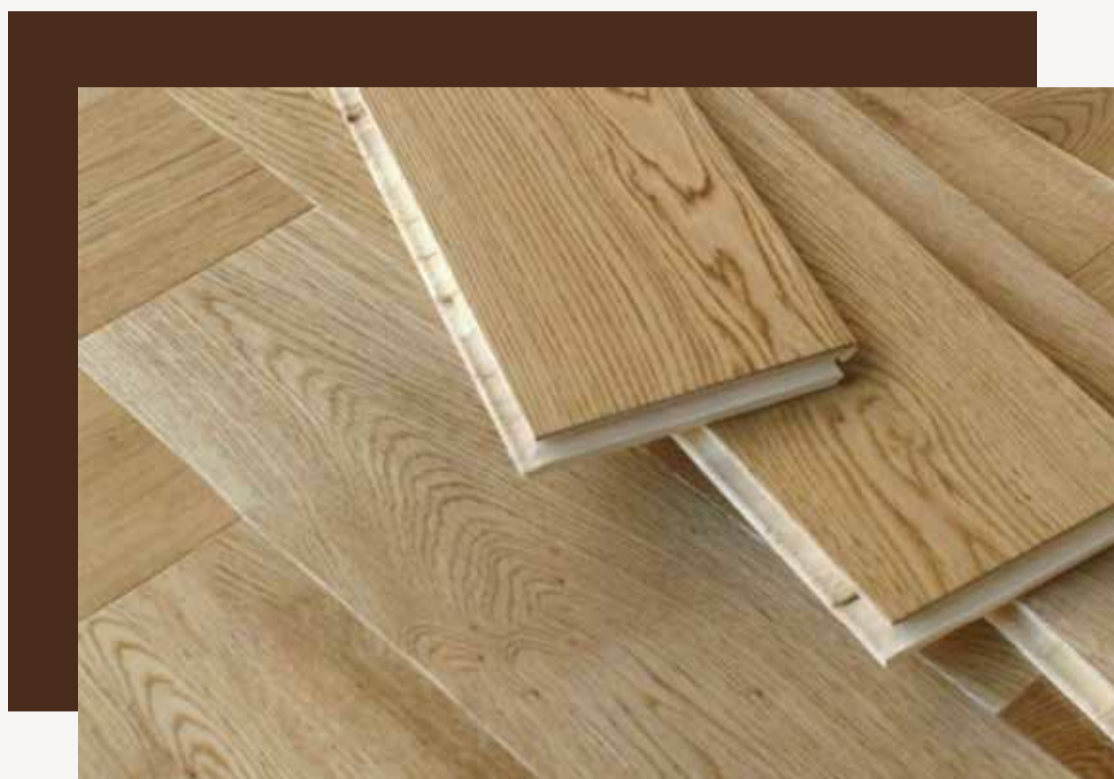
**Thickness**  
14mm - 20mm.

**Three Core Ply**  
3 ply, commonly known as  
multi-ply. This is to give the board  
greater stability from the stresses  
of expansion and contraction.

**Board Width** 120mm - 240mm. If you have a average  
sized room we recommend going for a mid width plank.



## Walnut Engineered wood



## Oak Engineered Wood

### Oak Engineered Prefinished Herringbone

---



**Size**

14/L3 x 90 x 600 mm

### Oak Engineered Prefinished Chevron

---



**Size**

14/L3 x 90 x 510 mm

## Prize List of Oak Engineered Wood

### Oak Engineered wood(unfinished)

Size/Length	600-1900 mm
15/L3 x 150 mm@24.54/ctn	\$11.80
15/L3 x 190 mm@31.09/ctn	\$12.80

### Oak Engineered wood(prefinished/natural matt)

Size/Length	600-1900 mm
15/L3 x 150 mm@24.54/ctn	\$11.50
15/L3 x 190 mm@31.09/ctn	\$13.50

### Oak Engineered wood(Herringbone)(unfinished)

Size/Length	600 mm
14/L3 x 127 mm@5.74/ctn	\$11.50

### Oak Engineered wood(Herringbone)(prefinished/natural matt)

Size/Length	600 mm
14/L3X90mm	\$11.20

### Oak Engineered wood(Chervon)(prefinished/natural matt)

Size/Length	600 mm
14/L3X90mm	\$11.50

\* Price stated are subject to change without prior notice

## Items can be Customized

